

1

2

3

4

5

6

7

8

NOTES:

1. MATERIAL:  
FITTING: 304/304L STANDARD; 316/316L WHEN -316 IS ADDED TO END OF P.N.  
DISC: 316/316L STANDARD; 304L WHEN SPECIFIED. SEE ROUTER FOR PART MAKEUP.  
DISC WIRE SCREEN MAKE UP PER DEN02-04.

2. ASSEMBLE PER OPMF-02.3

3. DESIGN: PER B31.3 CRITERIA; MIN WALL THICKNESS SEE SHEET 3

4. WELD AS FOLLOWS:  
1" HEX: WELD PER BW-100-AUTO-1 OR BW-100  
1 3/4" HEX: WELD PER BW-100-AUTO-1.75 OR BW-100

5. ANNEAL PER DPU01-01 PROCESS NUMBER 19004-60 UNLESS OTHERWISE SPECIFIED ON PURCHASE ORDER.

6. WORKSMANSHIP PER DMF01-24:  
PARTS TO BE FREE OF GOUGES, DINGS, AND DENTS VISABLE TO THE UNAIDED EYE.  
  
WHEN THE PART CONTAINS A CONICAL SEALING SURFACE, THE SURFACE MUST BE FREE OF FLAWS, NICKS AND CHATTER MARKS WHEN VIEWED UNDER AMPLE LIGHTING WITH THE UNAIDED EYE. SURFACE BURNISHING IS PERMITTABLE PRIOR TO SHIPPING.

7. OPERATING AND COLLAPSE PRESSURE (FOR ENGINEERING REFERENCE ONLY)  
1.00 INCH HEX = 6000 PSI - COLLAPSE PRESSURE 50 PSID  
1.75 INCH HEX = 3000 PSI - COLLAPSE PRESSURE 50 PSID

8. MICRON RATING  
SEE TABLE 1 FOR MICRON CODE.  
ASSEMBLIES TO BE BUBBLE POINT TESTED PER OPMF-63

9. CLEANING  
CLEAN ASSEMBLY PRE AND POST ANNEALING PER OPMF-500.

10. END FITTING SIZE AND TYPES  
SEE TABLE 2 FOR FITTING SIZE AND TABLE 3 FOR FITTING TYPE

11. PART MARKING:  
MARK PER OPMF-126 "NFC PART MARKING GUIDELINES"

12. FOR 1.75" OD USE FDS-1.75-2000  
FOR 1.00" OD USE FDS-1-2000  
SEE PAGE 5 FOR EXAMPLES

13. PRODUCT NUMBERING  
  
42XXT-(B) (C) (C) FOR IDENTICAL END FITTINGS  
42XXT-(B) (C) -(B) (C) FOR DIFFERENT END FITTINGS  
42XXT-(B) (C) -(D) FOR ACCESSORY OPTIONS  
  
WHERE,  
XX STANDS FOR MICRON CODE  
(B) STANDS FOR FITTING SIZE  
(C) STANDS FOR FITTING TYPE  
(D) STANDS FOR ACCESSORY OPTION

REVISIONS

DRAWING REV.	DESCRIPTION	DATE	APPROVED
P	ECO: 1289; 12BB 12DB CONFIGURATIONS	6/28/16	JB
Q	ECO 1391; 1MIN WALL COLUMN ADDED	2/10/17	JB
R	PER ECO 1412: UPDATED WORKMANSHIP AND PART MARKING NOTES	3/24/17	KMK
S	PER ECO 1499: UPDATED 4200 ASSEMBLIES FOR CURRENT STANDARDIZES COMPRESSION FITTINGS	8/25/17	KMK
T	PER ECO 1584: ADDED -8BD AND -8CC OPTIONS	1/18/18	KH
U	ECO 1646: UPDATED NOTES, ADDED FDS OPTION, AND PAGE 5	4-18-18	KK
V	ECO 1671: UPDATED NUT AND SLEEVE TO MONROE AEROSPACE PN	5/30/18	DJ
w	ECO 1715: ADDED REINFORCED ACCESSORY	8/6/2018	AO

TABLE 1 - MICRON CODE

CODE XX	NOM.	ABS.
2X	2	10
5	5	18
10	10	25
20	20	40
40	40	75
75	75	100
100	100	150
200	200	300

TABLE 2 - END FITTING SIZES

FITTING SIZE (B)	SIZE DESRIPTION FOR NPT	SIZE DESCRIPTION FOR ALL OTHER
1	1/8"	-
2	1/4"	1/8"
3	3/8"	3/16"
4	1/2"	1/4"
6	-	3/8"
8	-	1/2"
10	-	5/8"
12	-	3/4"
16	-	1"

TABLE 3 - END FITTING CODES

FITTING TYPE (C)	DESCRIPTION
M	MALE NPT
P	FEMALE NPT
T	37 DEG FLAIR
B	FEMALE O-RING
D	MALE O-RING
C	COMPRESSION
FS	FACE SEAL
AS 1098	37 DEG FLAIR WITH AS1098 CUT

TABLE 4 - ACCESSORY

ACCESSORY OPTION (D)	DESCRIPTION
LW	LOCKWIRE HOLES
12 FDS	2000 PSID FILTER DISC SUPPORT
R	REINFORCED PER DEN02-04

UNLESS OTHERWISE SPECIFIED  
DIMENSIONS ARE IN INCHES

TOLERANCES ON:  
2 PLACE DECIMAL: .XX +/-0.01  
3 PLACE DECIMAL: .XXX +/-0.005  
ANGULAR: +/- 0.5°

PART TO BE FREE OF BURRS  
REMOVE SHARP EDGES (FILLET 0.005" - 0.020") MEASUREMENT NOT REQUIRED  
SURFACE FINISH 125 Ra UNLESS NOTED, VISUAL INSPECTION ONLY REQUIRED  
IF PART REVISION IS NOT SPECIFIED, PART REV. MATCHES DRAWING REV.  
NFC WORKMANSHIP STANDARD DMF01-24 APPLIES

TITLE:  
FILTER, INLINE, 4200 SERIES WIRE MESH

PART NUMBER:  
TABULATED

PART REV:  
W

DWG NO.  
42XXTASSM

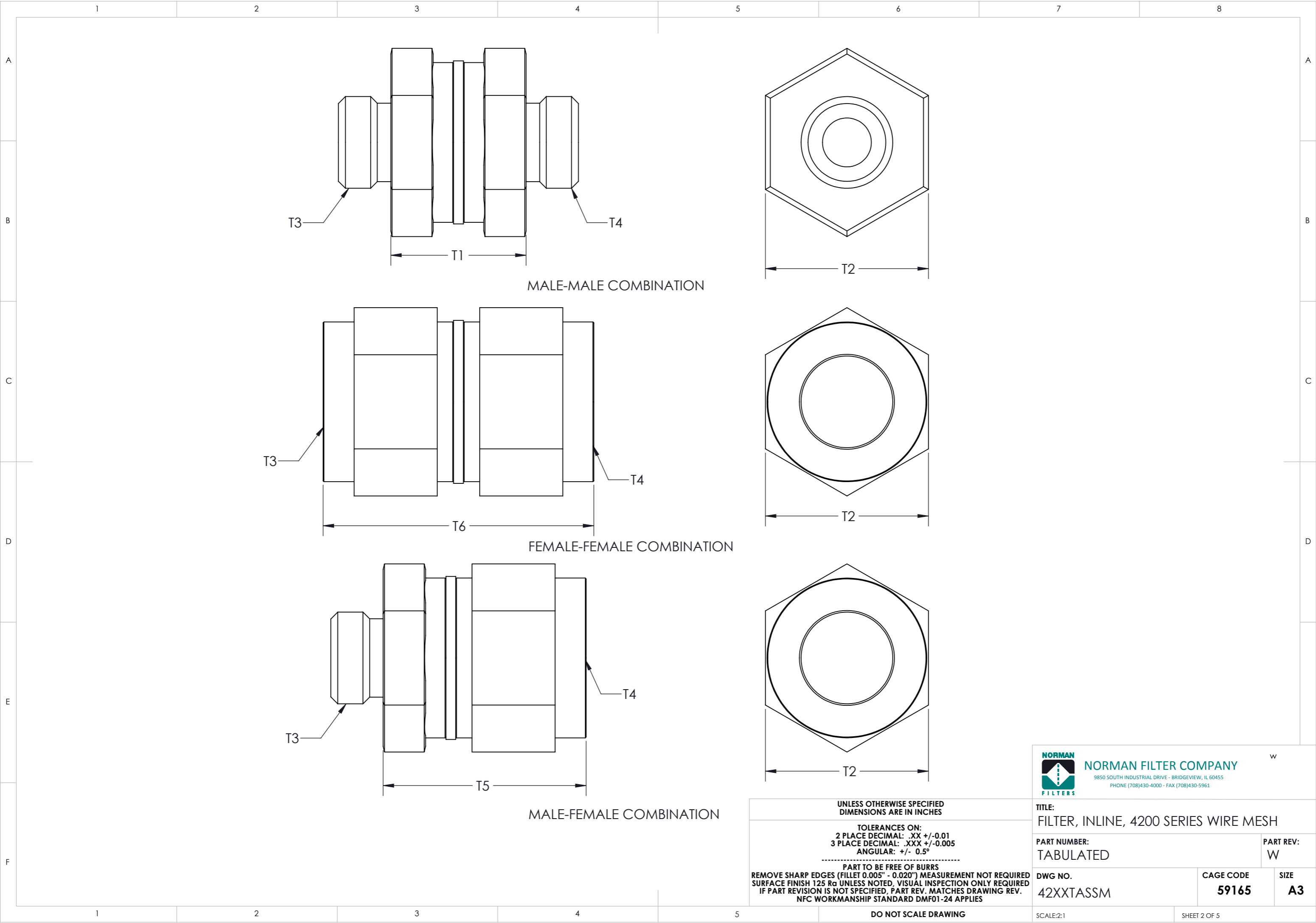
CAGE CODE  
59165

SIZE  
A3

DO NOT SCALE DRAWING

SCALE:1:16

SHEET 1 OF 5





**NORMAN FILTER COMPANY**  
9850 SOUTH INDUSTRIAL DRIVE - BRIDGEVIEW, IL 60455  
PHONE (708)430-4000 - FAX (708)430-5961

TITLE: FILTER, INLINE, 4200 SERIES WIRE MESH		PART REV: W	
PART NUMBER: TABULATED		DWG NO. 42XXTASSM	
CAGE CODE 59165		SIZE A3	
SCALE:2:1		SHEET 2 OF 5	

UNLESS OTHERWISE SPECIFIED  
DIMENSIONS ARE IN INCHES

TOLERANCES ON:  
2 PLACE DECIMAL: .XX +/-0.01  
3 PLACE DECIMAL: .XXX +/-0.005  
ANGULAR: +/- 0.5°

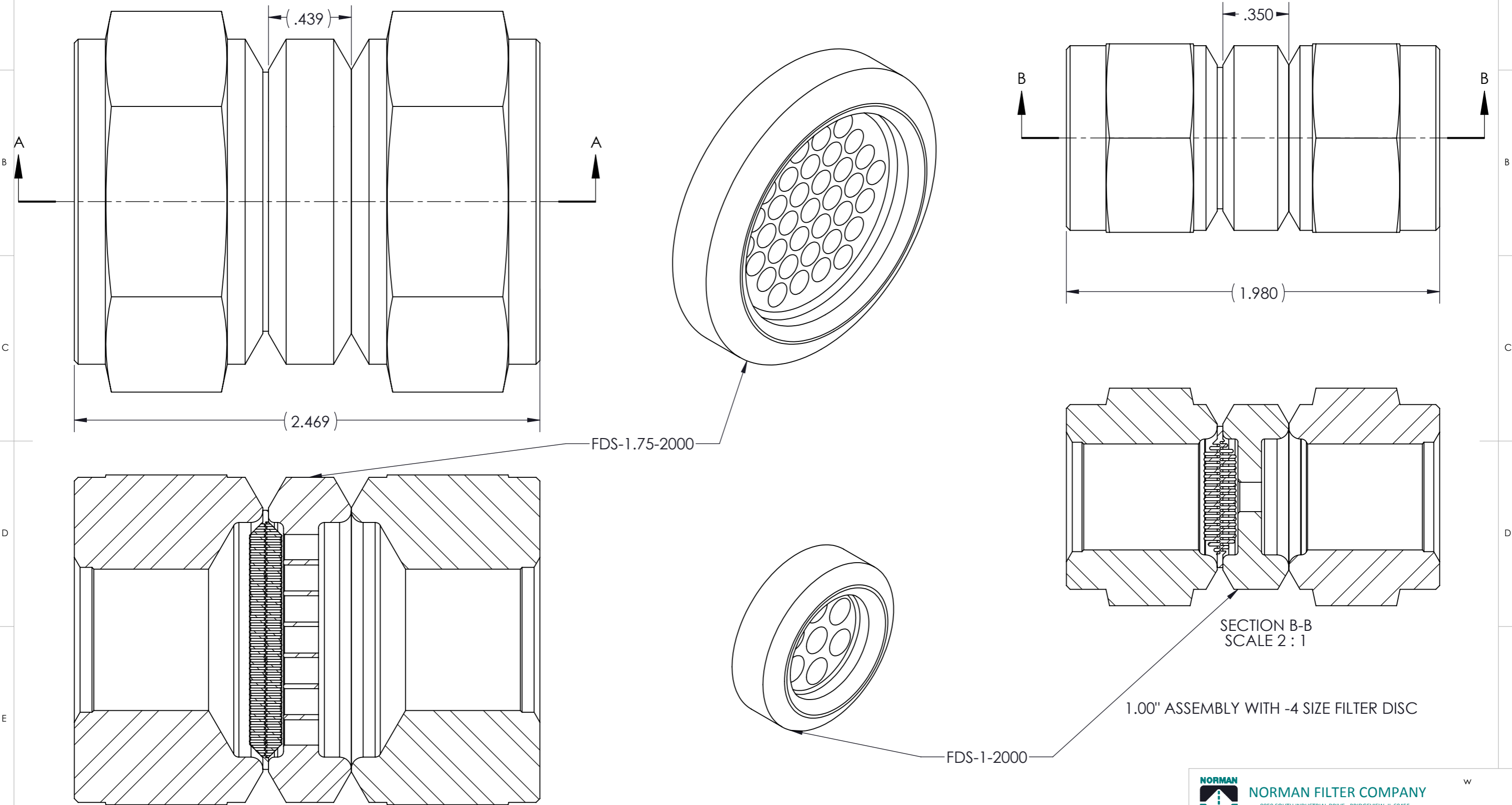
-----  
PART TO BE FREE OF BURRS  
REMOVE SHARP EDGES (FILLET 0.005" - 0.020") MEASUREMENT NOT REQUIRED  
SURFACE FINISH 125 Ra UNLESS NOTED, VISUAL INSPECTION ONLY REQUIRED  
IF PART REVISION IS NOT SPECIFIED, PART REV. MATCHES DRAWING REV.  
NFC WORKMANSHIP STANDARD DMF01-24 APPLIES

DO NOT SCALE DRAWING

1		2		3		4		5		6		7		8									
DIMENSION TYPE		PART REVISION		T1	T2	③	T3	T4	T5	T6													
DESCRIPTION				MALE-MALE FLAT TO FLAT	HEX SIZE HEX SIZE	MIN WALL [REF]	INLET FITTING INLET FITTING	OUTLET FITTING OUTLET FITTING	MALE-FEMALE FLAT TO FITTING	FEMALE-FEMALE FITTING TO FITTING													
TOLERANCE				±.030	±.01	±.01	GO/NO GO GAGE	GO/NO GO GAGE	±.030	±.030													
42XXT-1MP				-	1.00	.178	1/8-27 NPT	1/8-27 NPT	-	1.125													
42XXT-1M-4T				.650	1.00	.178	1/8-27 NPT	AS4395-4	-	-													
42XXT-1PP				-	1.00	.178	1/8-27 NPT	1/8-27 NPT	-	1.600													
42XXT-1P-4T				-	1.00	.178	1/8-27 NPT	AS 4395-4	1.125	-													
42XXT-2MM				.650	1.00	.178	1/4-18 NPT	1/4-18 NPT	-	-													
4XXT-2MP				-	1.00	.178	1/4-18 NPT	1/4-18 NPT	-	1.125													
42XXT-2M-4T				.650	1.00	.178	1/4-18 NPT	AS4395-4	-	-													
42XXT-2M-6T				.650	1.00	.178	1/4-18 NPT	AS4395-6	-	-													
42XXT-2PP				-	1.00	.178	1/4-18 NPT	1/4-18 NPT	-	1.600													
42XXT-2P-4D				-	1.00	.178	1/4-18 NPT	AS930-4	1.125	-													
42XXT-2P-4T				-	1.00	.178	1/4-18 NPT	AS4395-4	1.125	-													
42XXT-2PT				-	1.00	.178	1/4-18NPT	AS4395-2	1.125	-													
42XXT-2TT				.650	1.00	.178	AS4395-2	AS4395-2	-	-													
42XXT-3PP				-	1.75	.235	3/8-18 NPT	3/8-18 NPT	-	1.680													
42XXT-3TT				.650	1.00	.178	AS4395-3	AS4395-3	-	-													
42XXT-4T-6T				.650	1.00	.178	AS4395-4	AS4395-6	-	-													
42XXT-4BB				-	1.00	.178	AS5202-4	AS5202-4	-	1.600													
42XXT-4BD				-	1.00	.178	AS5202-4	AS930-4	1.125	-													
42XXT-4BT				-	1.00	.178	AS5202-4	AS4395-4	1.125	-													
42XXT-4DD				.650	1.00	.178	AS930-4	AS930-4	-	-													
42XXT-4DT				.650	1.00	.178	AS930-4	AS4395-4	-	-													
42XXT-4CC				.650	1.00	.178	AS4375-4	AS4375-4	-	-													
42XXT-4MM				1.400	1.75	.235	1/2-14 NPT	1/2-14 NPT	-	-													
42XXT-4MP				-	1.75	.235	1/2-14 NPT	1/2-14 NPT	1.540	-													
42XXT-4PP		A		-	1.75	.235	1/2-14 NPT	1/2-14 NPT	-	1.680													
42XXT-4TT				.650	1.00	.178	AS4395-4	AS4395-4	-	-													
42XXT-6FS				.750	1.00	.178	9/16-18 UNF 2A	9/16-18 UNF 2A	-	-													
42XXT-4P-8T				-	1.75	.235	1/2-14NPT	AS4395-8	1.540	-													
42XXT-6BT				-	1.00	.178	AS5202-6	AS4395-6	1.125	-													
42XXT-6BD				-	1.00	.178	AS5202-6	AS930-6	1.125	-													
42XXT-6BB				-	1.00	.178	AS5202-6	AS5202-6	-	1.600													
42XXT-6DD				.650	1.00	.178	AS930-6	AS930-6	-	-													
42XXT-6DT				.650	1.00	.178	AS930-6	AS4395-6	-	-													
42XXT-6T-4B				-	1.00	.178	AS4395-6	AS5202-4	1.125	-													
42XXT-6T-4D				.650	1.00	.178	AS4395-6	AS930-4	-	-													
42XXT-6TT				.650	1.00	.178	AS4395-6	AS4395-6	-	-													
42XXT-6CC				.650	1.00	.178	AS4375-6	AS4375-6	-	-													
42XXT-8BB				-	1.75	.235	AS5202-8	AS5202-8	-	1.980													
42XXT-8DD				1.400	1.75	.235	AS930-8	AS930-8	-	-													
42XXT-8DT				1.400	1.75	.235	AS930-8	AS4395-8	-	-													
42XXT-8BT				-	1.75	.235	AS5202-8	AS4395-8	1.690	-													
42XXT-8TT				1.400	1.75	.235	AS4395-8	AS4395-8	-	-													
42XXT-8BD				-	1.75	.235	AS5202-8	AS930-8	1.690	-													
42XXT-8CC				1.400	1.75	.235	AS4375-8	AS4375-8	-	-													
42XXT-12TT				1.400	1.75	.235	AS4395-12	AS4395-12	-	-													
42XXT-12BB				-	1.75	.235	AS5202-12	AS5202-12	-	2.400													
42XXT-12DB				1.400	1.75	.235	AS930-12	AS5202-12	1.910	-													
42XXT-16TT				1.400	1.75	.235	AS4395-16	AS4395-16	-	-													
42XXT-16BB				-	1.75	.235	AS5202-16	AS5202-16	-	3.540													
									UNLESS OTHERWISE SPECIFIED DIMENSIONS ARE IN INCHES			TITLE: FILTER, INLINE, 4200 SERIES WIRE MESH											
									TOLERANCES ON: 2 PLACE DECIMAL: .XX +/-0.01 3 PLACE DECIMAL: .XXX +/-0.005 ANGULAR: +/- 0.5° ----- PART TO BE FREE OF BURRS REMOVE SHARP EDGES (FILLET 0.005" - 0.020") MEASUREMENT NOT REQUIRED SURFACE FINISH 125 Ra UNLESS NOTED, VISUAL INSPECTION ONLY REQUIRED IF PART REVISION IS NOT SPECIFIED, PART REV. MATCHES DRAWING REV. NFC WORKMANSHIP STANDARD DMF01-24 APPLIES														
F												PART NUMBER: TABULATED		PART REV: W									
												DWG NO. 42XXTASSM		CAGE CODE 59165		SIZE A3							
1			2			3			4			5			DO NOT SCALE DRAWING			SCALE:1:16			SHEET 3 OF 5		

	1	2	3	4	5	6	7	8																																																																																																																																																																																																																							
A	<table><tr><th>ASSEMBLY P.N</th><th>INLET FITTING P.N. ①</th><th>FILTER DISC P.N. ② WHERE XX IS MICRON CODE</th><th>OUTLET FITTING P.N. ③</th></tr><tr><td>42XXT-1MP</td><td>42T-1M</td><td>F*-4173-4-XX</td><td>42T-1P</td></tr><tr><td>42XXT-1M-4T</td><td>42T-1M</td><td>F*-4173-4-XX</td><td>42T-4T</td></tr><tr><td>42XXT-1PP</td><td>42T-1P</td><td>F*-4173-4-XX</td><td>42T-1P</td></tr><tr><td>42XXT-1P-4T</td><td>42T-1P</td><td>F*-4173-4-XX</td><td>42T-4T</td></tr><tr><td>42XXT-2MM</td><td>42T-2M</td><td>F*-4173-4-XX</td><td>42T-2M</td></tr><tr><td>4XXT-2MP</td><td>42T-2M</td><td>F*-4173-4-XX</td><td>42T-2P</td></tr><tr><td>42XXT-2M-4T</td><td>42T-2M</td><td>F*-4173-4-XX</td><td>42T-4T</td></tr><tr><td>42XXT-2M-6T</td><td>42T-2M</td><td>F*-4173-4-XX</td><td>42T-6T</td></tr><tr><td>42XXT-2PP</td><td>42T-2P</td><td>F*-4173-4-XX</td><td>42T-2P</td></tr><tr><td>42XXT-2P-4D</td><td>42T-2P</td><td>F*-4173-4-XX</td><td>42T-4D</td></tr><tr><td>42XXT-2P-4T</td><td>42T-2P</td><td>F*-4173-4-XX</td><td>42T-4T</td></tr><tr><td>42XXT-2PT</td><td>42T-2P</td><td>F*-4173-4-XX</td><td>42T-2T</td></tr><tr><td>42XXT-2TT</td><td>42T-2T</td><td>F*-4173-4-XX</td><td>42T-2T</td></tr><tr><td>42XXT-3PP</td><td>42T-3P</td><td>F*-4173-6-XX</td><td>42T-3P</td></tr><tr><td>42XXT-3TT</td><td>42T-3T</td><td>F*-4173-4-XX</td><td>42T-3T</td></tr><tr><td>42XXT-4T-6T</td><td>42T-4T</td><td>F*-4173-4-XX</td><td>42T-6T</td></tr><tr><td>42XXT-4BB</td><td>42T-4B</td><td>F*-4173-4-XX</td><td>42T-4B</td></tr><tr><td>42XXT-4BD</td><td>42T-4B</td><td>F*-4173-4-XX</td><td>42T-4D</td></tr><tr><td>42XXT-4BT</td><td>42T-4B</td><td>F*-4173-4-XX</td><td>42T-4T</td></tr><tr><td>42XXT-4DD</td><td>42T-4D</td><td>F*-4173-4-XX</td><td>42T-4D</td></tr><tr><td>42XXT-4DT</td><td>42T-4D</td><td>F*-4173-4-XX</td><td>42T-4T</td></tr><tr><td>***42XXT-4CC</td><td>42T-4C</td><td>F*-4173-4-XX</td><td>42T-4C</td></tr><tr><td>42XXT-4MM</td><td>42T-4M</td><td>F*-4173-6-XX</td><td>42T-4M</td></tr><tr><td>42XXT-4MP</td><td>42T-4M</td><td>F*-4173-6-XX</td><td>42T-4P</td></tr><tr><td>42XXT-4PP</td><td>42T-4P</td><td>F*-4173-6-XX</td><td>42T-4P</td></tr><tr><td>42XXT-4TT</td><td>42T-4T</td><td>F*-4173-4-XX</td><td>42T-4T</td></tr><tr><td>42XXT-6FS</td><td>42T-6FS</td><td>F*-4173-4-XX</td><td>42T-6FS</td></tr><tr><td>42XXT-4P-8T</td><td>42T-4P</td><td>F*-4173-6-XX</td><td>42T-8T</td></tr><tr><td>42XXT-6BT</td><td>42T-6B</td><td>F*-4173-4-XX</td><td>42T-6T</td></tr><tr><td>42XXT-6BD</td><td>42T-6B</td><td>F*-4173-4-XX</td><td>42T-6D</td></tr><tr><td>42XXT-6BB</td><td>42T-6B</td><td>F*-4173-4-XX</td><td>42T-6B</td></tr><tr><td>42XXT-6DD</td><td>42T-6D</td><td>F*-4173-4-XX</td><td>42T-6D</td></tr><tr><td>42XXT-6DT</td><td>42T-6D</td><td>F*-4173-4-XX</td><td>42T-6T</td></tr><tr><td>42XXT-6T-4B</td><td>42T-6T</td><td>F*-4173-4-XX</td><td>42T-4B</td></tr><tr><td>42XXT-6T-4D</td><td>42T-6T</td><td>F*-4173-4-XX</td><td>42T-4D</td></tr><tr><td>42XXT-6TT</td><td>42T-6T</td><td>F*-4173-4-XX</td><td>42T-6T</td></tr><tr><td>***42XXT-6CC</td><td>42T-6C</td><td>F*-4173-4-XX</td><td>42T-6C</td></tr><tr><td>42XXT-8BB</td><td>42T-8B</td><td>F*-4173-6-XX</td><td>42T-8B</td></tr><tr><td>42XXT-8DD</td><td>42T-8D</td><td>F*-4173-6-XX</td><td>42T-8D</td></tr><tr><td>42XXT-8DT</td><td>42T-8D</td><td>F*-4173-6-XX</td><td>42T-8T</td></tr><tr><td>42XXT-8BT</td><td>42T-8B</td><td>F*-4173-6-XX</td><td>42T-8T</td></tr><tr><td>42XXT-8BD</td><td>42T-8B</td><td>F*-4173-6-XX</td><td>42T-8D</td></tr><tr><td>42XXT-8CC</td><td>42T-8C</td><td>F*-4173-6-XX</td><td>42T-8C</td></tr><tr><td>42XXT-8TT</td><td>42T-8T</td><td>F*-4173-6-XX</td><td>42T-8T</td></tr><tr><td>42XXT-12TT</td><td>42T-12T</td><td>F*-4173-6-XX</td><td>42T-12T</td></tr><tr><td>42XXT-12BB</td><td>42T-12B</td><td>F*-4173-6-XX</td><td>42T-12B</td></tr><tr><td>42XXT-12DB</td><td>42T-12D</td><td>F*-4173-6-XX</td><td>42T-12B</td></tr><tr><td>42XXT-16TT</td><td>42T-16T</td><td>F*-4173-6-XX</td><td>42T-16T</td></tr><tr><td>42XXT-16BB</td><td>42T-16B</td><td>F*-4173-6-XX</td><td>42T-16B</td></tr></table>				ASSEMBLY P.N	INLET FITTING P.N. ①	FILTER DISC P.N. ② WHERE XX IS MICRON CODE	OUTLET FITTING P.N. ③	42XXT-1MP	42T-1M	F*-4173-4-XX	42T-1P	42XXT-1M-4T	42T-1M	F*-4173-4-XX	42T-4T	42XXT-1PP	42T-1P	F*-4173-4-XX	42T-1P	42XXT-1P-4T	42T-1P	F*-4173-4-XX	42T-4T	42XXT-2MM	42T-2M	F*-4173-4-XX	42T-2M	4XXT-2MP	42T-2M	F*-4173-4-XX	42T-2P	42XXT-2M-4T	42T-2M	F*-4173-4-XX	42T-4T	42XXT-2M-6T	42T-2M	F*-4173-4-XX	42T-6T	42XXT-2PP	42T-2P	F*-4173-4-XX	42T-2P	42XXT-2P-4D	42T-2P	F*-4173-4-XX	42T-4D	42XXT-2P-4T	42T-2P	F*-4173-4-XX	42T-4T	42XXT-2PT	42T-2P	F*-4173-4-XX	42T-2T	42XXT-2TT	42T-2T	F*-4173-4-XX	42T-2T	42XXT-3PP	42T-3P	F*-4173-6-XX	42T-3P	42XXT-3TT	42T-3T	F*-4173-4-XX	42T-3T	42XXT-4T-6T	42T-4T	F*-4173-4-XX	42T-6T	42XXT-4BB	42T-4B	F*-4173-4-XX	42T-4B	42XXT-4BD	42T-4B	F*-4173-4-XX	42T-4D	42XXT-4BT	42T-4B	F*-4173-4-XX	42T-4T	42XXT-4DD	42T-4D	F*-4173-4-XX	42T-4D	42XXT-4DT	42T-4D	F*-4173-4-XX	42T-4T	***42XXT-4CC	42T-4C	F*-4173-4-XX	42T-4C	42XXT-4MM	42T-4M	F*-4173-6-XX	42T-4M	42XXT-4MP	42T-4M	F*-4173-6-XX	42T-4P	42XXT-4PP	42T-4P	F*-4173-6-XX	42T-4P	42XXT-4TT	42T-4T	F*-4173-4-XX	42T-4T	42XXT-6FS	42T-6FS	F*-4173-4-XX	42T-6FS	42XXT-4P-8T	42T-4P	F*-4173-6-XX	42T-8T	42XXT-6BT	42T-6B	F*-4173-4-XX	42T-6T	42XXT-6BD	42T-6B	F*-4173-4-XX	42T-6D	42XXT-6BB	42T-6B	F*-4173-4-XX	42T-6B	42XXT-6DD	42T-6D	F*-4173-4-XX	42T-6D	42XXT-6DT	42T-6D	F*-4173-4-XX	42T-6T	42XXT-6T-4B	42T-6T	F*-4173-4-XX	42T-4B	42XXT-6T-4D	42T-6T	F*-4173-4-XX	42T-4D	42XXT-6TT	42T-6T	F*-4173-4-XX	42T-6T	***42XXT-6CC	42T-6C	F*-4173-4-XX	42T-6C	42XXT-8BB	42T-8B	F*-4173-6-XX	42T-8B	42XXT-8DD	42T-8D	F*-4173-6-XX	42T-8D	42XXT-8DT	42T-8D	F*-4173-6-XX	42T-8T	42XXT-8BT	42T-8B	F*-4173-6-XX	42T-8T	42XXT-8BD	42T-8B	F*-4173-6-XX	42T-8D	42XXT-8CC	42T-8C	F*-4173-6-XX	42T-8C	42XXT-8TT	42T-8T	F*-4173-6-XX	42T-8T	42XXT-12TT	42T-12T	F*-4173-6-XX	42T-12T	42XXT-12BB	42T-12B	F*-4173-6-XX	42T-12B	42XXT-12DB	42T-12D	F*-4173-6-XX	42T-12B	42XXT-16TT	42T-16T	F*-4173-6-XX	42T-16T	42XXT-16BB	42T-16B	F*-4173-6-XX	42T-16B	<h1>TYPICAL BILL OF MATERIAL, WELD DETAIL, AND PART MARKING</h1> <div><p>* - SIGNIFIES MANUFACTURER OF DISC. SEE DRAWING F*-4173-X-YY FOR DEFINITION **-ROUTER WILL CONTROL B.O.M. FOR PRODUCTION PARTS ***-COMPRESSION FITTING ASSEMBLIES WILL REQUIRE NUT AND SLEEVE</p><table><tr><th colspan="3">***COMPRESSION NUT &amp; SLEEVE</th></tr><tr><th>ASSEMBLY</th><th>NUT</th><th>SLEEVE</th></tr><tr><td>42XXT-4CC</td><td>MS21921-4J</td><td>MS21922-4C</td></tr><tr><td>42XXT-6CC</td><td>MS21921-6J</td><td>MS21922-6C</td></tr><tr><td>42XXT-8CC</td><td>MS21921-8J</td><td>MS21922-8C</td></tr></table></div>				***COMPRESSION NUT & SLEEVE			ASSEMBLY	NUT	SLEEVE	42XXT-4CC	MS21921-4J	MS21922-4C	42XXT-6CC	MS21921-6J	MS21922-6C	42XXT-8CC	MS21921-8J	MS21922-8C
ASSEMBLY P.N	INLET FITTING P.N. ①	FILTER DISC P.N. ② WHERE XX IS MICRON CODE	OUTLET FITTING P.N. ③																																																																																																																																																																																																																												
42XXT-1MP	42T-1M	F*-4173-4-XX	42T-1P																																																																																																																																																																																																																												
42XXT-1M-4T	42T-1M	F*-4173-4-XX	42T-4T																																																																																																																																																																																																																												
42XXT-1PP	42T-1P	F*-4173-4-XX	42T-1P																																																																																																																																																																																																																												
42XXT-1P-4T	42T-1P	F*-4173-4-XX	42T-4T																																																																																																																																																																																																																												
42XXT-2MM	42T-2M	F*-4173-4-XX	42T-2M																																																																																																																																																																																																																												
4XXT-2MP	42T-2M	F*-4173-4-XX	42T-2P																																																																																																																																																																																																																												
42XXT-2M-4T	42T-2M	F*-4173-4-XX	42T-4T																																																																																																																																																																																																																												
42XXT-2M-6T	42T-2M	F*-4173-4-XX	42T-6T																																																																																																																																																																																																																												
42XXT-2PP	42T-2P	F*-4173-4-XX	42T-2P																																																																																																																																																																																																																												
42XXT-2P-4D	42T-2P	F*-4173-4-XX	42T-4D																																																																																																																																																																																																																												
42XXT-2P-4T	42T-2P	F*-4173-4-XX	42T-4T																																																																																																																																																																																																																												
42XXT-2PT	42T-2P	F*-4173-4-XX	42T-2T																																																																																																																																																																																																																												
42XXT-2TT	42T-2T	F*-4173-4-XX	42T-2T																																																																																																																																																																																																																												
42XXT-3PP	42T-3P	F*-4173-6-XX	42T-3P																																																																																																																																																																																																																												
42XXT-3TT	42T-3T	F*-4173-4-XX	42T-3T																																																																																																																																																																																																																												
42XXT-4T-6T	42T-4T	F*-4173-4-XX	42T-6T																																																																																																																																																																																																																												
42XXT-4BB	42T-4B	F*-4173-4-XX	42T-4B																																																																																																																																																																																																																												
42XXT-4BD	42T-4B	F*-4173-4-XX	42T-4D																																																																																																																																																																																																																												
42XXT-4BT	42T-4B	F*-4173-4-XX	42T-4T																																																																																																																																																																																																																												
42XXT-4DD	42T-4D	F*-4173-4-XX	42T-4D																																																																																																																																																																																																																												
42XXT-4DT	42T-4D	F*-4173-4-XX	42T-4T																																																																																																																																																																																																																												
***42XXT-4CC	42T-4C	F*-4173-4-XX	42T-4C																																																																																																																																																																																																																												
42XXT-4MM	42T-4M	F*-4173-6-XX	42T-4M																																																																																																																																																																																																																												
42XXT-4MP	42T-4M	F*-4173-6-XX	42T-4P																																																																																																																																																																																																																												
42XXT-4PP	42T-4P	F*-4173-6-XX	42T-4P																																																																																																																																																																																																																												
42XXT-4TT	42T-4T	F*-4173-4-XX	42T-4T																																																																																																																																																																																																																												
42XXT-6FS	42T-6FS	F*-4173-4-XX	42T-6FS																																																																																																																																																																																																																												
42XXT-4P-8T	42T-4P	F*-4173-6-XX	42T-8T																																																																																																																																																																																																																												
42XXT-6BT	42T-6B	F*-4173-4-XX	42T-6T																																																																																																																																																																																																																												
42XXT-6BD	42T-6B	F*-4173-4-XX	42T-6D																																																																																																																																																																																																																												
42XXT-6BB	42T-6B	F*-4173-4-XX	42T-6B																																																																																																																																																																																																																												
42XXT-6DD	42T-6D	F*-4173-4-XX	42T-6D																																																																																																																																																																																																																												
42XXT-6DT	42T-6D	F*-4173-4-XX	42T-6T																																																																																																																																																																																																																												
42XXT-6T-4B	42T-6T	F*-4173-4-XX	42T-4B																																																																																																																																																																																																																												
42XXT-6T-4D	42T-6T	F*-4173-4-XX	42T-4D																																																																																																																																																																																																																												
42XXT-6TT	42T-6T	F*-4173-4-XX	42T-6T																																																																																																																																																																																																																												
***42XXT-6CC	42T-6C	F*-4173-4-XX	42T-6C																																																																																																																																																																																																																												
42XXT-8BB	42T-8B	F*-4173-6-XX	42T-8B																																																																																																																																																																																																																												
42XXT-8DD	42T-8D	F*-4173-6-XX	42T-8D																																																																																																																																																																																																																												
42XXT-8DT	42T-8D	F*-4173-6-XX	42T-8T																																																																																																																																																																																																																												
42XXT-8BT	42T-8B	F*-4173-6-XX	42T-8T																																																																																																																																																																																																																												
42XXT-8BD	42T-8B	F*-4173-6-XX	42T-8D																																																																																																																																																																																																																												
42XXT-8CC	42T-8C	F*-4173-6-XX	42T-8C																																																																																																																																																																																																																												
42XXT-8TT	42T-8T	F*-4173-6-XX	42T-8T																																																																																																																																																																																																																												
42XXT-12TT	42T-12T	F*-4173-6-XX	42T-12T																																																																																																																																																																																																																												
42XXT-12BB	42T-12B	F*-4173-6-XX	42T-12B																																																																																																																																																																																																																												
42XXT-12DB	42T-12D	F*-4173-6-XX	42T-12B																																																																																																																																																																																																																												
42XXT-16TT	42T-16T	F*-4173-6-XX	42T-16T																																																																																																																																																																																																																												
42XXT-16BB	42T-16B	F*-4173-6-XX	42T-16B																																																																																																																																																																																																																												
***COMPRESSION NUT & SLEEVE																																																																																																																																																																																																																															
ASSEMBLY	NUT	SLEEVE																																																																																																																																																																																																																													
42XXT-4CC	MS21921-4J	MS21922-4C																																																																																																																																																																																																																													
42XXT-6CC	MS21921-6J	MS21922-6C																																																																																																																																																																																																																													
42XXT-8CC	MS21921-8J	MS21922-8C																																																																																																																																																																																																																													
B																																																																																																																																																																																																																															
C																																																																																																																																																																																																																															
D																																																																																																																																																																																																																															
E					<div><div><p>UNLESS OTHERWISE SPECIFIED DIMENSIONS ARE IN INCHES</p><p>TOLERANCES ON: 2 PLACE DECIMAL: .XX +/-0.01 3 PLACE DECIMAL: .XXX +/-0.005 ANGULAR: +/- 0.5°</p><p>----- PART TO BE FREE OF BURRS REMOVE SHARP EDGES (FILLET 0.005" - 0.020") MEASUREMENT NOT REQUIRED SURFACE FINISH 125 Ra UNLESS NOTED, VISUAL INSPECTION ONLY REQUIRED IF PART REVISION IS NOT SPECIFIED, PART REV. MATCHES DRAWING REV. NFC WORKMANSHIP STANDARD DMF01-24 APPLIES</p></div><div><p><b>TITLE:</b> FILTER, INLINE, 4200 SERIES WIRE MESH</p><p><b>PART NUMBER:</b> TABULATED</p><p><b>DWG NO.</b> 42XXTASSM</p></div><div><p><b>CAGE CODE</b> <b>59165</b></p><p><b>SIZE</b> <b>A3</b></p></div></div>																																																																																																																																																																																																																										
F	1	2	3	4	5	DO NOT SCALE DRAWING		SCALE:2:1	SHEET 4 OF 5																																																																																																																																																																																																																						

EXAMPLE OF ASSEMBLIES WITH 2000 PSID FILTER DISC SUPPORTS



SECTION A-A  
SCALE 2 : 1

1.75" ASSEMBLY WITH -6 SIZE FILTER DISC

SECTION B-B  
SCALE 2 : 1

1.00" ASSEMBLY WITH -4 SIZE FILTER DISC

UNLESS OTHERWISE SPECIFIED  
DIMENSIONS ARE IN INCHES

TOLERANCES ON:  
2 PLACE DECIMAL: .XX +/-0.01  
3 PLACE DECIMAL: .XXX +/-0.005  
ANGULAR: +/- 0.5°

-----  
PART TO BE FREE OF BURRS  
REMOVE SHARP EDGES (FILLET 0.005" - 0.020") MEASUREMENT NOT REQUIRED  
SURFACE FINISH 125 Ra UNLESS NOTED, VISUAL INSPECTION ONLY REQUIRED  
IF PART REVISION IS NOT SPECIFIED, PART REV. MATCHES DRAWING REV.  
NFC WORKMANSHIP STANDARD DMF01-24 APPLIES

**NORMAN**  
**FILTERS**

**NORMAN FILTER COMPANY**  
9850 SOUTH INDUSTRIAL DRIVE - BRIDGEVIEW, IL 60455  
PHONE (708)430-4000 - FAX (708)430-5961

TITLE:  
FILTER, INLINE, 4200 SERIES RMF

PART NUMBER:  
TABULATED

PART REV:  
W

DWG NO.  
42XXRTASSM

CAGE CODE  
59165

SIZE  
A3

DO NOT SCALE DRAWING

SCALE:1:1

SHEET 5 OF 5